



## Enhancing Environmental Transparency Towards Sustainability With OCIANA®

Krista Foster, Director of Products, GSTS

Scott MacPhee, Commercial Account Manager, GSTS

May 1, 2025

GLOBAL SPATIAL TECHNOLOGY SOLUTIONS INC. ("GSTS") PROPRIETARY AND CONFIDENTIAL. The information which appears herein is proprietary and confidential and the property of GSTS. It is submitted for the sole purpose of enabling assessment thereof by the recipient and must be maintained in confidence, protected and not disclosed to any person or used for any other purpose without the prior written consent of GSTS.



# Agenda

**01** About GSTS

**02** About OCIANA<sup>®</sup>

**03** Digitization, Collaboration & Decarbonization with OCIANA<sup>®</sup>

- Collaborative Optimisation Solution (COS)
- Environmental Performance Management (EPM) Toolkit



# About GSTS





# About GSTS

- Global maritime company spun out of a Canadian space company that developed the world's first commercial global maritime monitoring satellite.
- **FOCUS:** Delivering predictive AI-powered solutions to solve major challenges faced by the maritime industry
- **SPECIALTY:** Customer-focused technical team intent on developing solutions in support of maritime safety and security, supply chain resilience and climate change using innovative data collection and analysis techniques and leveraging advanced AI technologies to adapt to a dynamic maritime environment
- **SOLUTION:** Proprietary SaaS platform, OCIANA<sup>®</sup>, designed to enhance real-time decision making and enable collaboration across the maritime industry



# About OCIANA®





# OCIANA<sup>®</sup>: Maritime Collaboration Platform

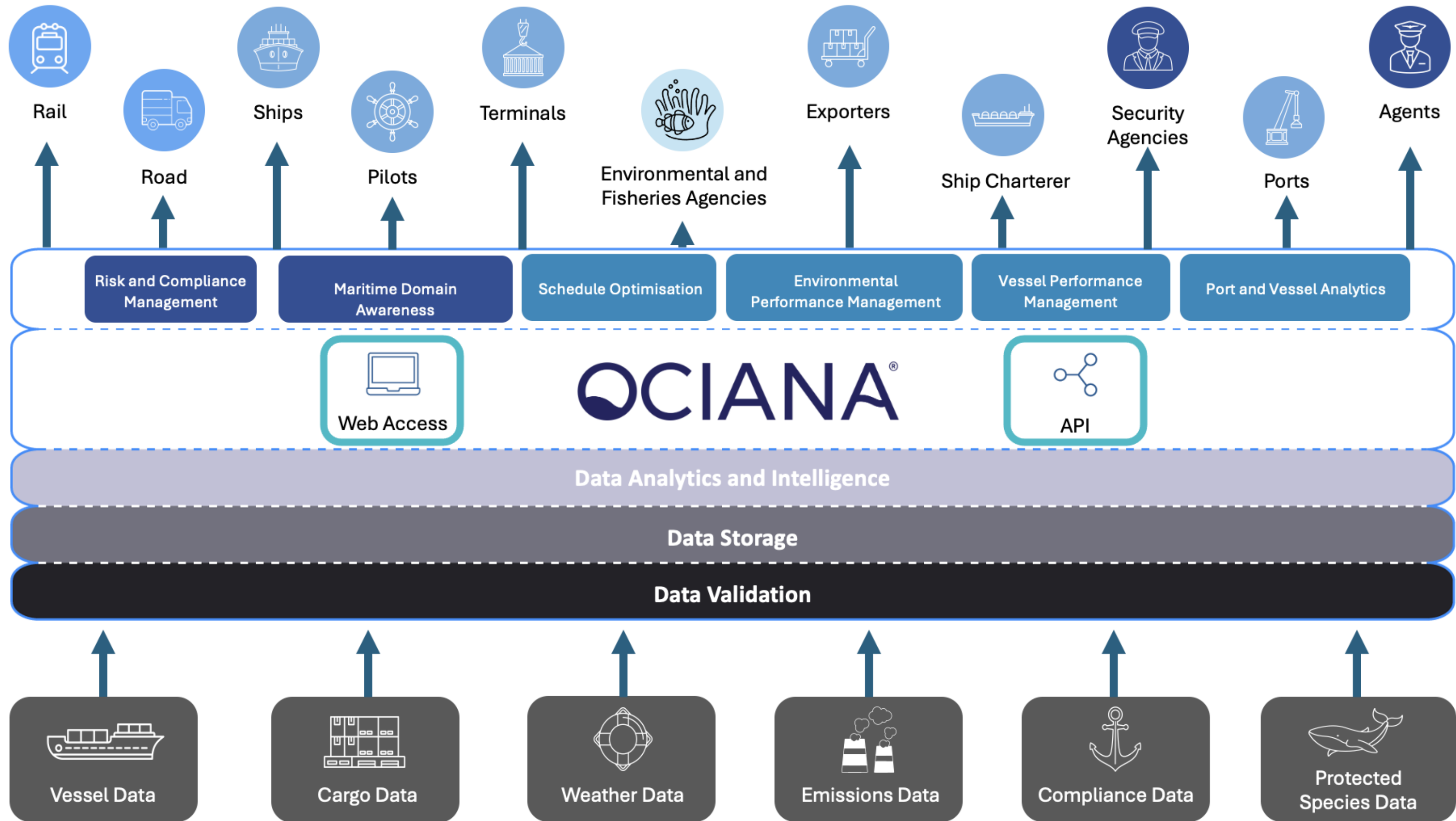
OCIANA<sup>®</sup> incorporates the latest developments in **Artificial Intelligence** and **Big Data Analytics** to improve maritime situational awareness and provide real-time decision-making intelligence.

## Multi-Source Data Analytics

- Designed to ingest a wide range of data sources including global AIS data, an array of satellite imagery and third-party datasets
- OCIANA<sup>®</sup> spatially and temporally correlates the data and employs AI algorithms
- Output from the AI/ML trained models can be accessed through the web-based UI or API supporting data interoperability

## Partner Communication

- Embedded communications channel enables multiple users to share information in real time
- Advanced chat and collaboration tools facilitate coordinated response
- Rooted in data governance - data quality, data stewardship, data protection and data management





**OCIANA<sup>®</sup>**  
Maritime Collaboration Platform





# Industry Collaboration

5+ years of successful collaboration with key maritime players resulting in several capabilities targeted at streamlining vessel berthing to support Just-in-Time Arrivals and Green Voyages.

## Port Arrivals

- ETA Prediction – accurately predict ETA of all vessels arriving at port
- Intelligent Geofences – automatically receive alerts and updated ETA predictions when ships cross pre-defined checkpoints

## Port Performance and Optimisation

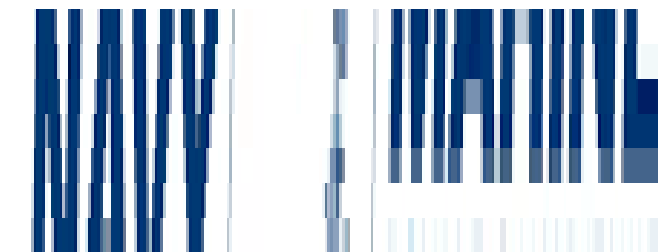
- Port Analytics – provide current wait times and traffic conditions
- Schedule Optimisation Planner – explore a set of feasible sequences to process operations based on the optimal allocation of port resources

## Environmental Performance Management

- GHG Emissions Calculator – calculate carbon footprint within port boundaries
- Digitized Trade Routes – tabulate emissions for all vessels globally; report on vessel voyages between two or more ports where Green Shipping Corridors are established



# Customers & Collaborators







# OCIANA<sup>®</sup>

## Collaborative Optimisation Solution



# Ocean Supercluster Project

- Awarded a **\$12M two-year contract** to advance the capabilities of OCIANA<sup>®</sup> to enable all stakeholders involved in the port call process to improve efficiency and sustainability of maritime operations
- OCIANA's latest capability, the **Collaborative Optimisation Solution** will connect ports, terminals, ships, waterways and pilotage authorities via a common platform to:
  - Bring together operational data – currently stored in separate systems – **to facilitate data sharing and empower maritime collaboration**
- Based on IMO standards, OCIANA will:
  - Enable seamless data exchange between various systems
  - Ensure interoperability with various systems
  - Streamline processes for vessel reporting





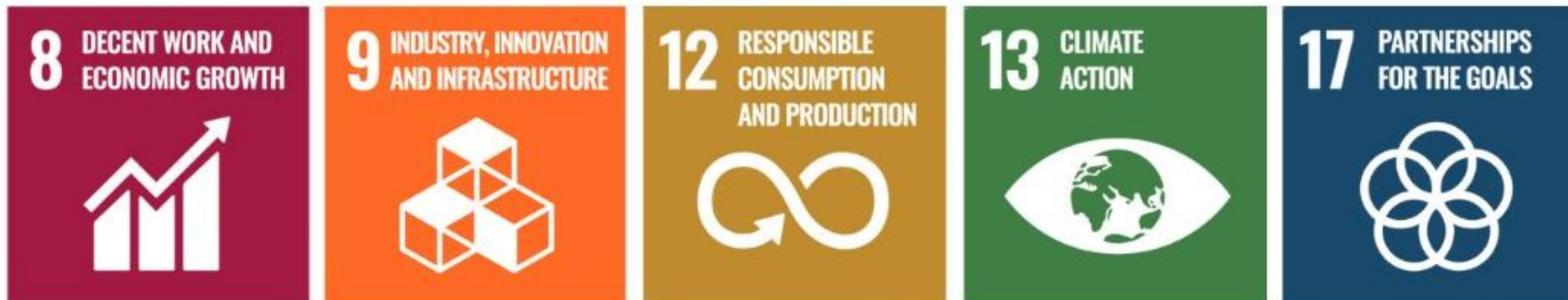
# OCIANA<sup>®</sup> Collaborative Optimisation Solution

## Optimizing Ports Calls and Supply Chain Operations through AI Predictive Insights

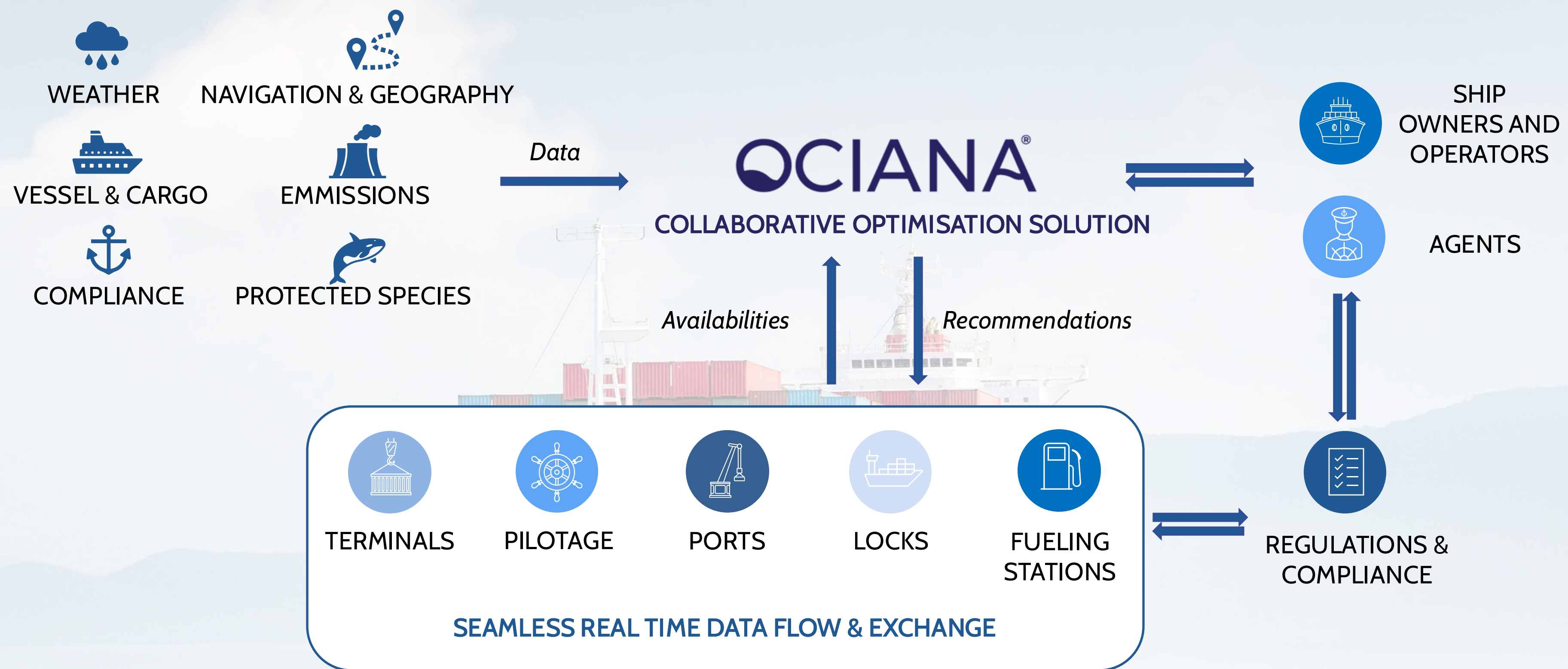
- Allowing for the sharing of real-time data, coordinated planning and enhanced decision-making through Just-in-Time Port Call Open API specifications

## Facilitating JIT Arrivals aimed at:

- Enabling ships to optimise steaming speed, thereby lowering fuel consumption and reducing emissions
- Minimizing waiting times and maximizing operational efficiency across the maritime industry



# OCIANA<sup>®</sup>: Maritime Ecosystem Optimization





# Key Objectives

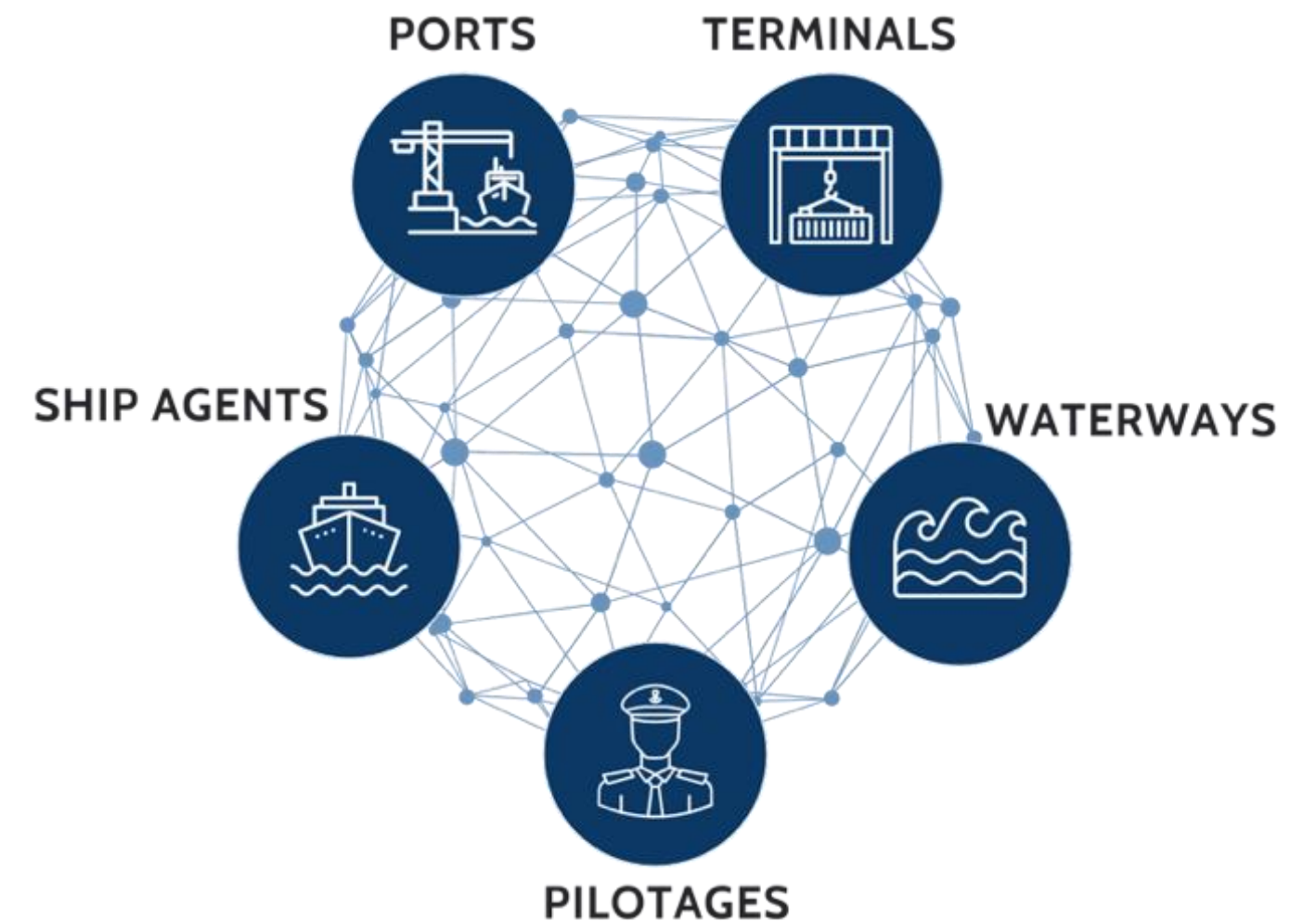
Connect all stakeholders via a common platform, OCIANA<sup>®</sup> to:

- Receive more accurate information on vessel movements and resource delays in real-time
- Leverage data insights to enhance planning and coordination and streamlining vessel berthing
- Provide decision-making intelligence for dynamic environments
- Support route optimization toward green voyages



# Expected Outcomes

- Reduction of delays for all maritime stakeholders
- Improved transit times for ships
- Reduced fuel consumption and inherent reduction of GHG from JIT Arrival
- Human resource schedule optimization through improved planning and coordination
- Optimization of berth occupancy
- Long-term anticipated enhanced intermodal coordination





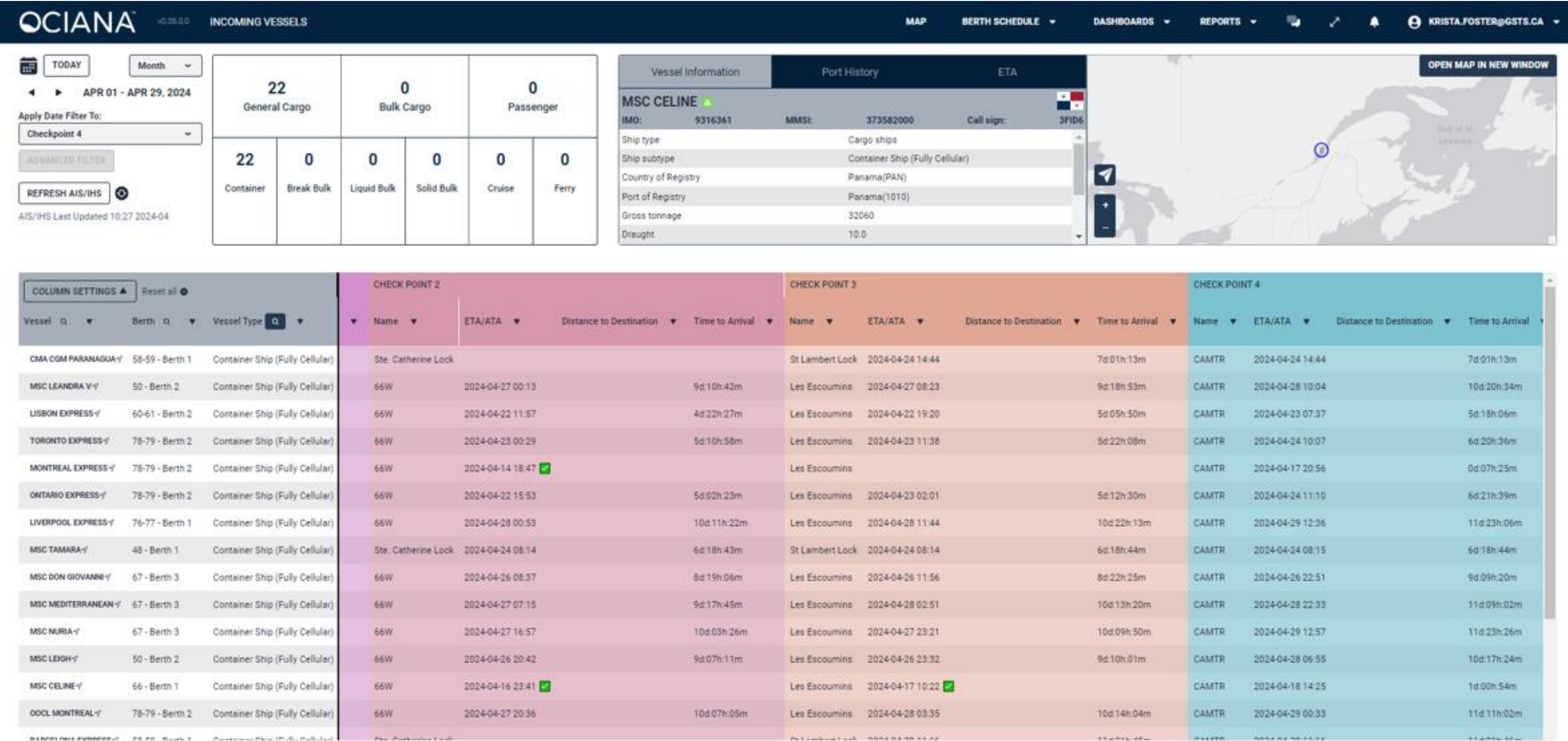
# OCIANA's Collaborative Optimisation Solution - Screens





# Incoming Vessels Screen

## Leveraging OCIANA's ETA Prediction & Intelligent Geofences





# Schedule Entries Screen

## Leveraging OCIANA's Port Analytics

OCIANA™  
v0.37.0.0

SCHEDULE ENTRIES

MAP

BERTH SCHEDULE ▾

DASHBOARDS ▾

REPORTS ▾

37

KRISTA.FOSTER@GSTS.CA ▾

DRAFT

PUBLISHED

MASTER ▾

Apply Date Filter To:  
Any Date Fields ▾

TODAY

Month ▾

◀ JUL 01 - JUL 30, 2024 ▶

REFRESH AIS/IHS ↻

AIS/IHS Last Updated 19:59 2024-11

ePAN:

Vessel Name

IMO

MMSI

Call Sign

Commodities

Master Name

Country of Registry

Port of Registry

Length

9102722

357455000

GE2

210

Vessel Information

Port History

ETA

Destination [Self Reported]

ETA [Self Reported]

ETA [Prediction]

ETA [Date Prediction Made]

Last port visited

MONTREAL

2024-10-28 09:00:00

2024-11-13 07:02:10

2024-11-13 07:02:01

SAINT JOHN

OPEN MAP IN NEW WINDOW

+ NEW SCHEDULE ENTRY

✎ EDIT ENTRY

🗑 DELETE ENTRY

🔍 AUDIT LOG

💬 COMMENTS

📎 ATTACHMENTS

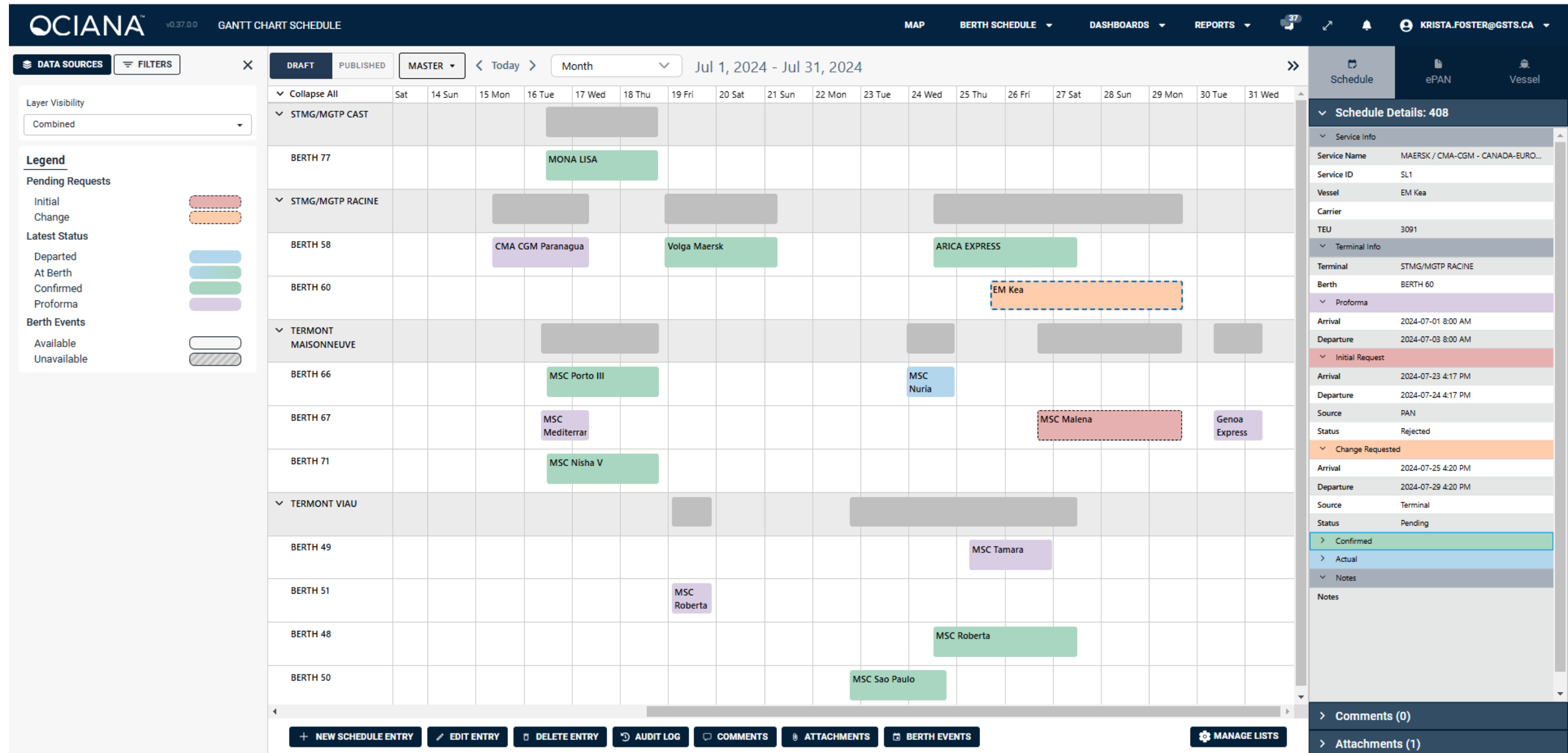
📅 BERTH EVENTS

⚙ MANAGE LISTS



# Gantt Chart View of Collaborative Optimisation Solution

Leveraging OCIANA's Embedded Communications Channel and Advanced Collaboration Tools





# Enhanced Pre-Arrival Notification

## Basic Booking Request:

- Service Selector (if applicable)
- Vessel Information
- Arrival & Departure
- Notes & Submit

## Electronic Pre-Arrival Notice:

- Port Calls
- Discharge & Loading Information
- Crew
- Passengers
- Stowaways
- Certificates
- Notes & Submit

## Voyage Planning Form (Pilot recommendations)

The image displays two screenshots of the Port of Montreal Extranet system, showing the 'Port calls' and 'Discharge information' forms.

**Top Screenshot: Port calls form**

- Navigation:** Vessel, Arrival & departure, Port calls (active), Discharge, Loading, Crew, Passenger, Stowaway, Certificate, Remarks.
- Form Fields:**
  - Is the vessel arriving from overseas? (Yes/No)
  - Next port of call known? (Known port, TBA foreign port, TBA Canadian port)
  - Last port of call\* (Field required)
  - Last port of call (Field required)
  - Last port of call (Field required)
  - Last port of call (Field required)
  - Last port of call (Field required)
  - Last port of call (Field required)
  - Next port of call\* (Field required)
  - Next port of call\* (Field required)
  - Next port of call\* (Field required)
  - Next port of call\* (Field required)
  - Next port of call\* (Field required)
- Buttons:** Next, Add

**Bottom Screenshot: Discharge information form**

- Navigation:** Vessel, Arrival & departure, Port calls, Discharge (active), Loading, Crew, Passenger, Stowaway, Certificate, Remarks, Log.
- Form Fields:**
  - Description of cargo to discharge
  - Number of 20' containers
  - Number of 40' containers
  - Number of empty containers
  - Number of other containers
  - Total cargo weight (TM)
  - Non-containerized cargo (TM)
  - Liquid bulk cargo (TM)
  - Solid bulk cargo (TM)
- Buttons:** Next, Add





 **OCIANA**<sup>®</sup>

Environmental Performance Management  
(EPM) Toolkit



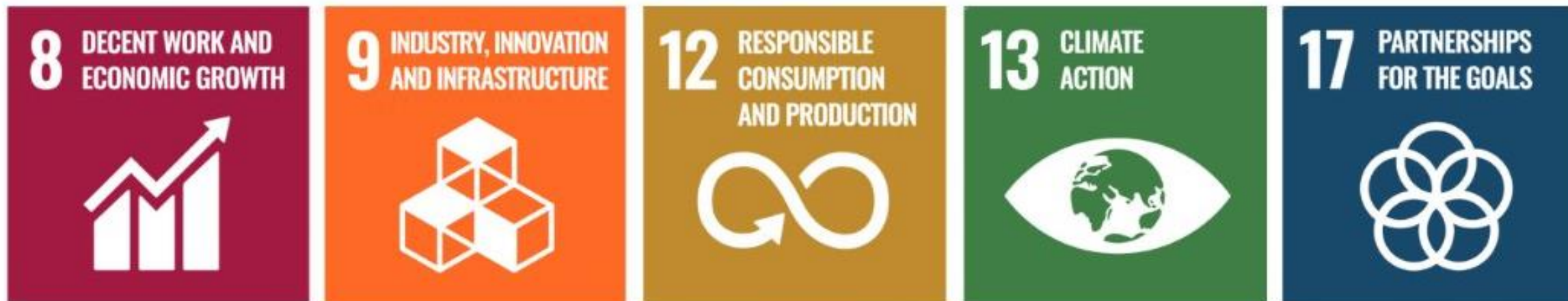
# OCIANA<sup>®</sup> Environmental Performance Management Toolkit

## Improving Global Decarbonization Efforts through Environmental Transparency

- Allowing for digital collaboration across all maritime stakeholders to action real time information to develop strategies for reducing emissions, improving fuel efficiency and enhancing overall vessel operations

## Facilitating **Green Digital Shipping Corridors** aimed at:

- Enabling real-time monitoring and optimization of shipping corridor performance.
- Identifying solutions to increase operational efficiency essential for achieving global sustainability goals and complying with IMO regulations.





# Key Benefits

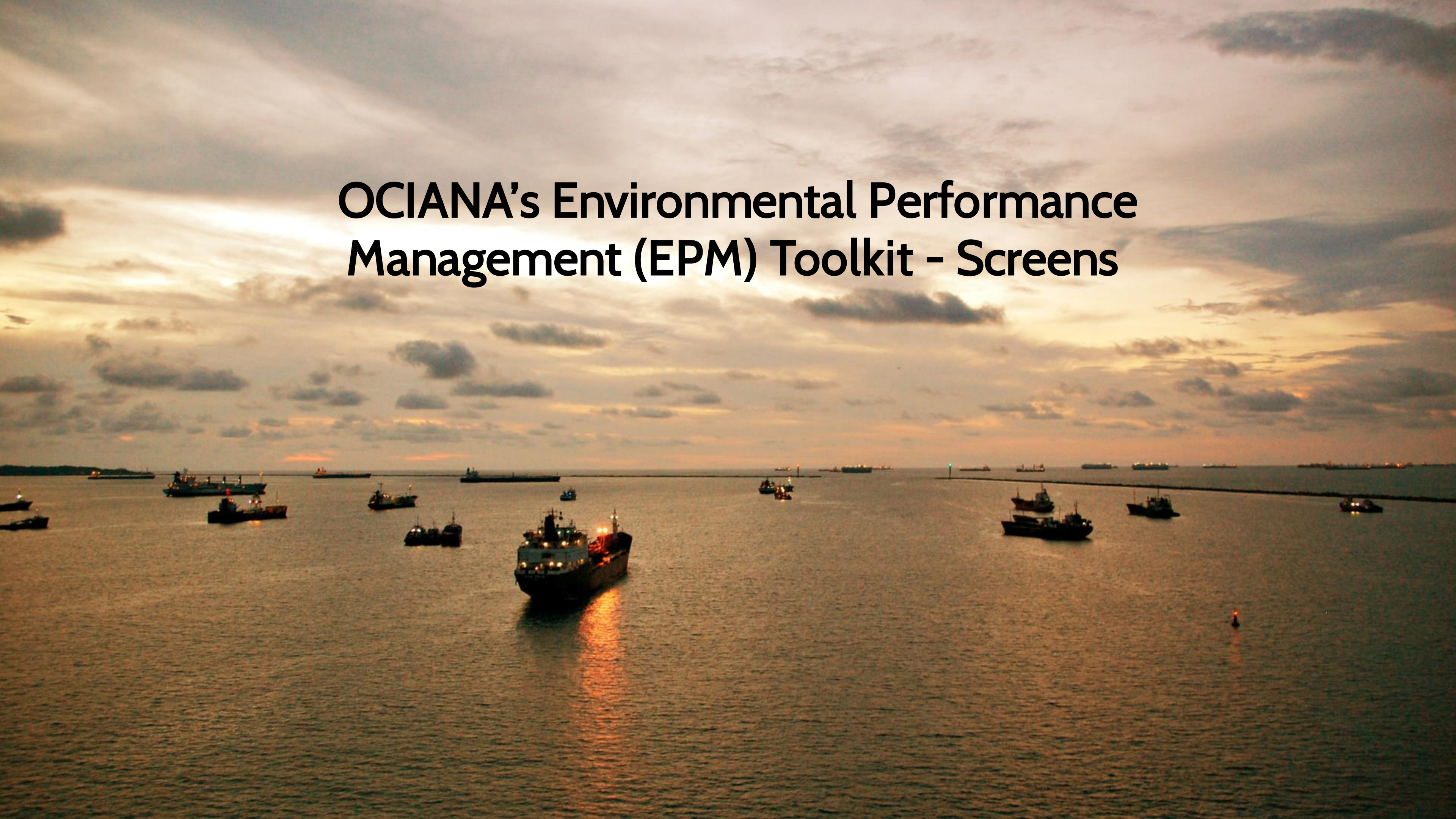
## Emissions Measurement, Reduction, and Compliance

- Real-time, global monitoring and analysis of fuel consumption, greenhouse gas emissions and voyage performance
- Assess historical trends in efficiency and decarbonization and derive actionable insights to optimize vessel and port performance
- Leverage data visualization and machine learning to identify inefficiencies and implement emissions reduction strategies and optimize shipping corridor performance.
- Aggregate emissions at different levels and present them in the context of efficiency metrics (e.g., carbon intensity)
- Track compliance with regulations like the International Maritime Organization's Carbon Intensity Indicator (CII) and Energy Efficiency Existing Ship Index (EEXI)





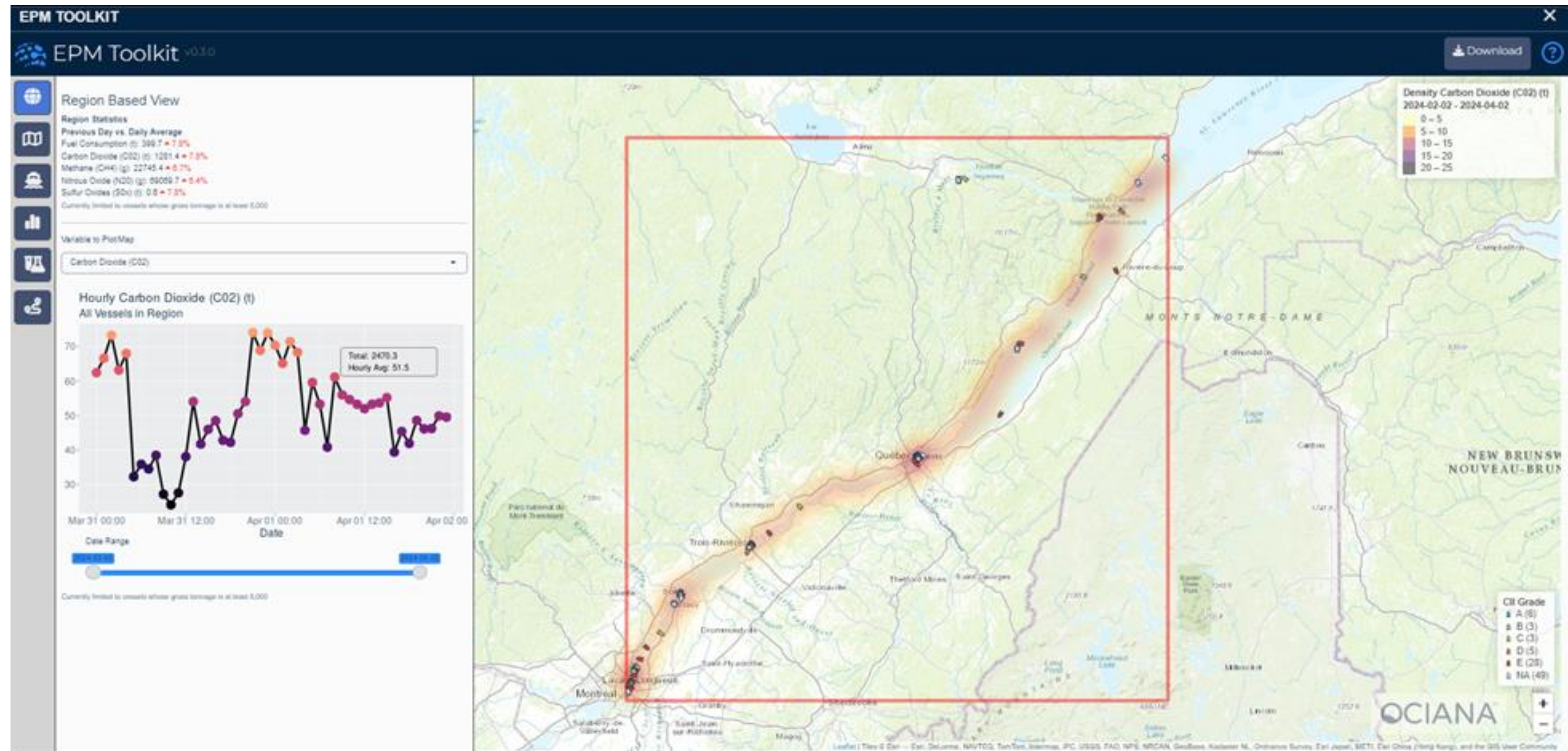
# OCIANA's Environmental Performance Management (EPM) Toolkit - Screens





# OCIANA® EPM Toolkit: Region View

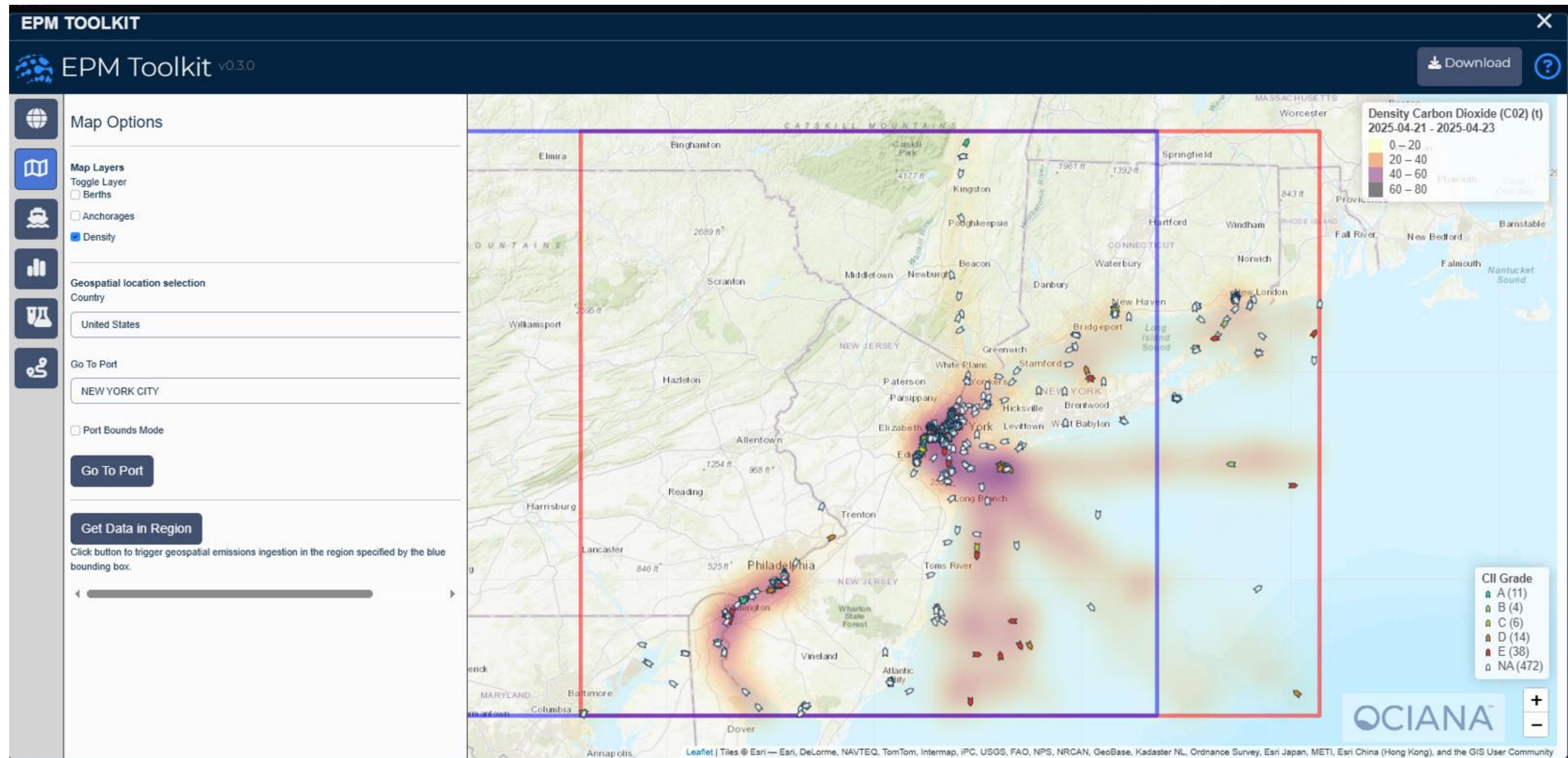
Current and historical emissions and fuel consumption for vessels in a geographic region, such as a port.





# OCIANA® EPM Toolkit: Map Options

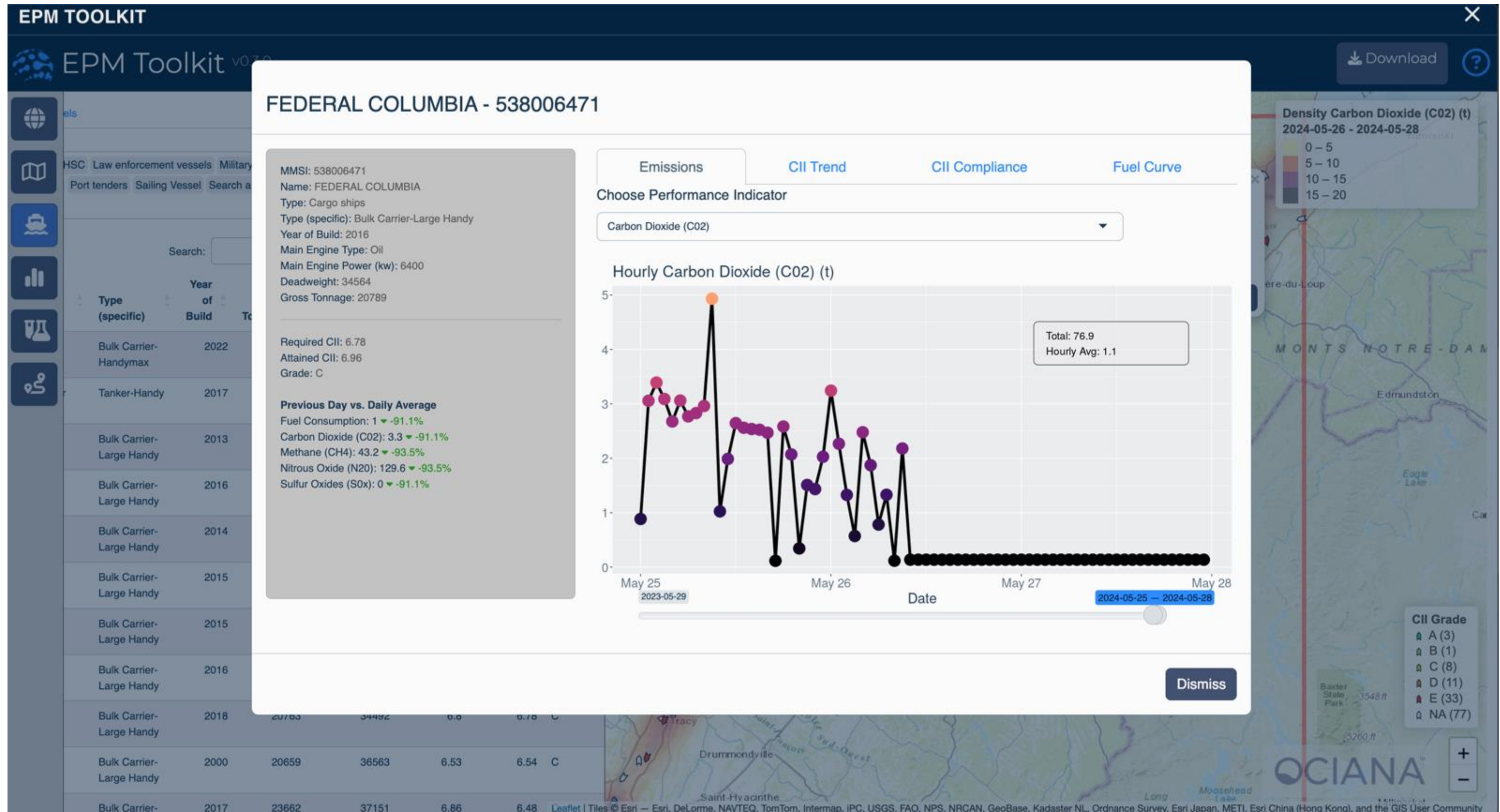
Options for changing the data in the map or changing the Region of Interest.





# OCIANA® EPM Toolkit: Vessel View

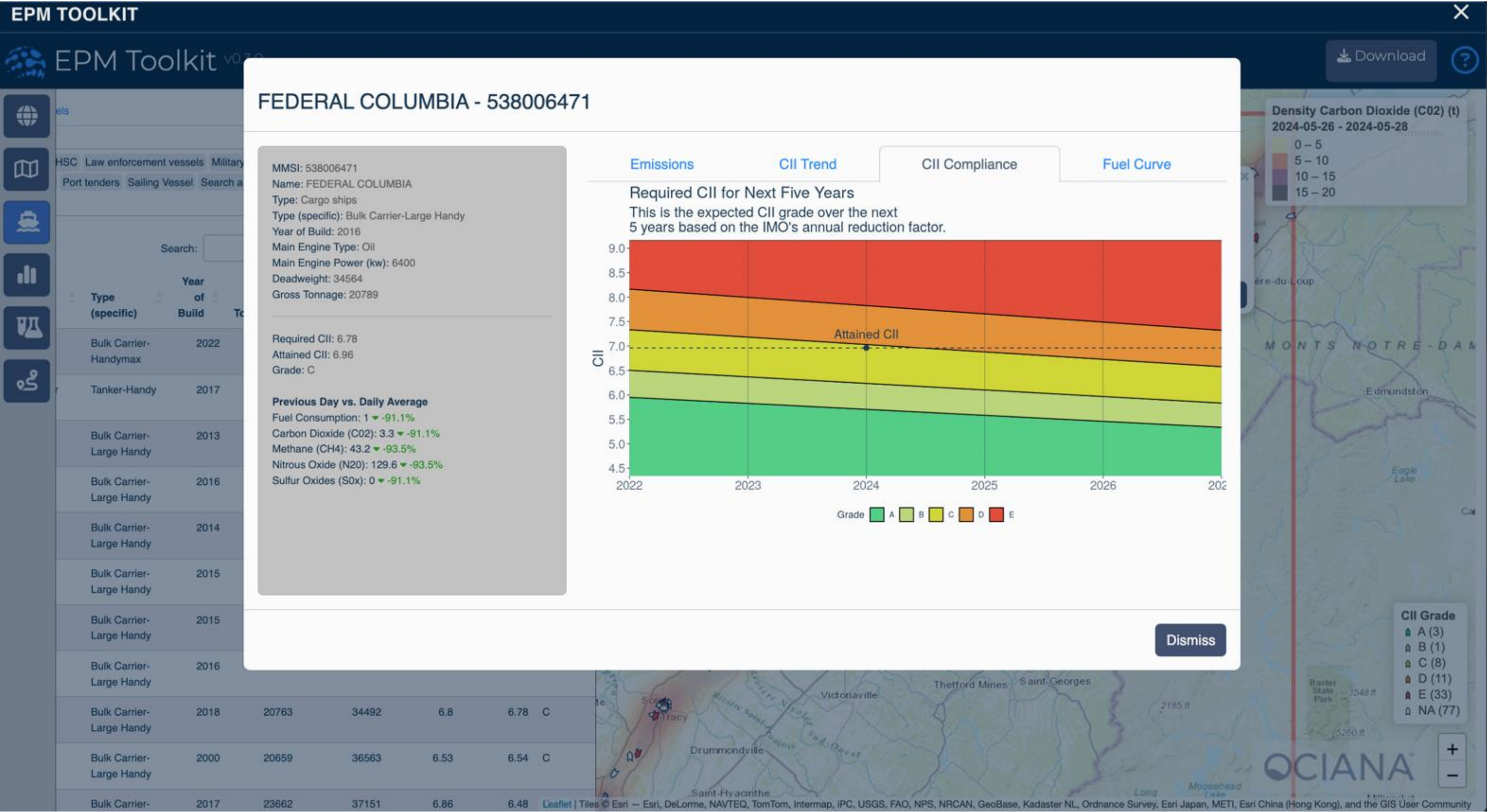
Enable stakeholders to quickly identify practical solutions to increase operational efficiency.





# OCIANA® EPM Toolkit: Vessel View

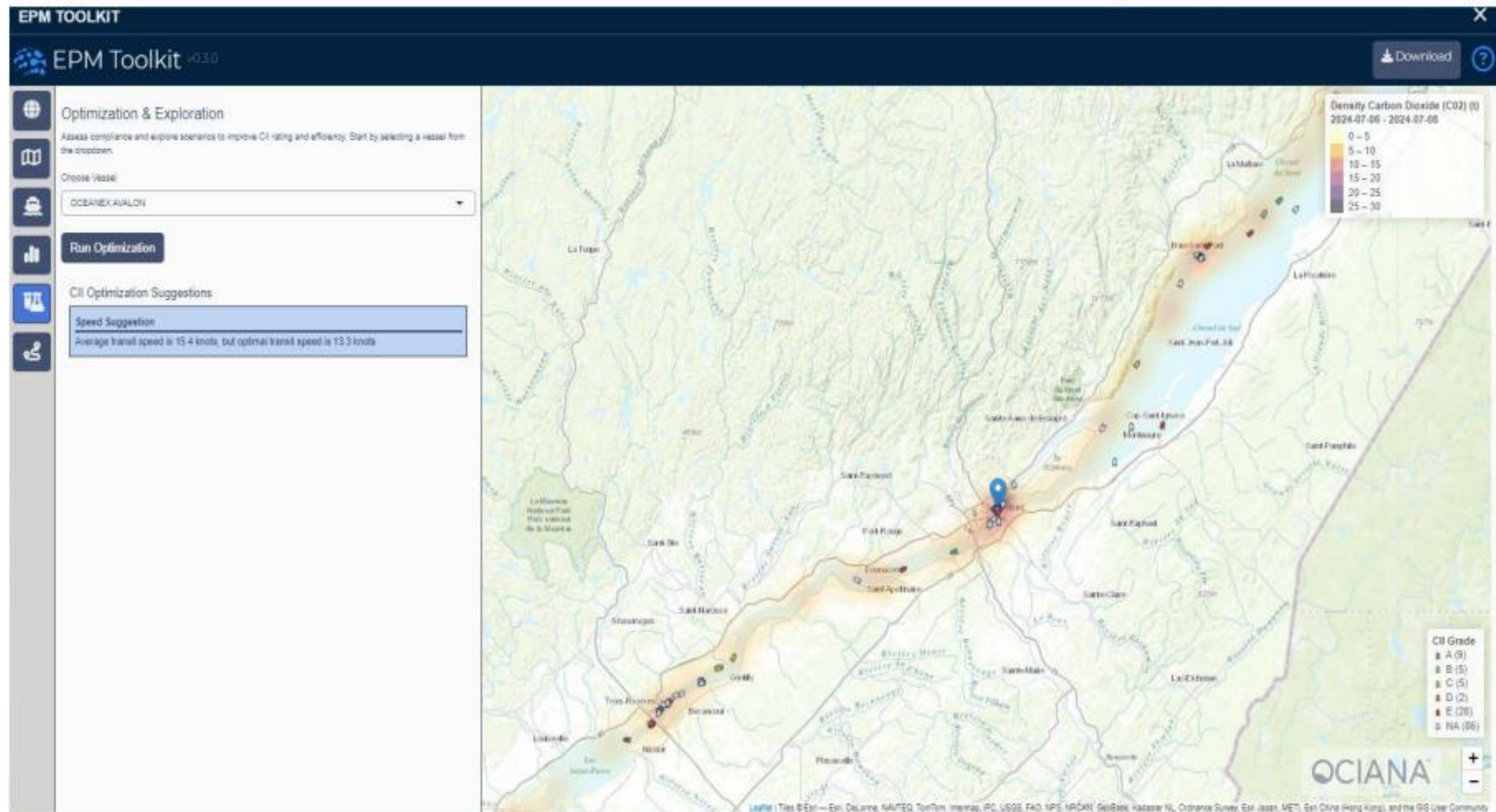
Enable vessel operators to determine and forecast CII compliance as well as identify ways to improve CII.





# OCIANA® EPM Toolkit: Optimisation & Exploration

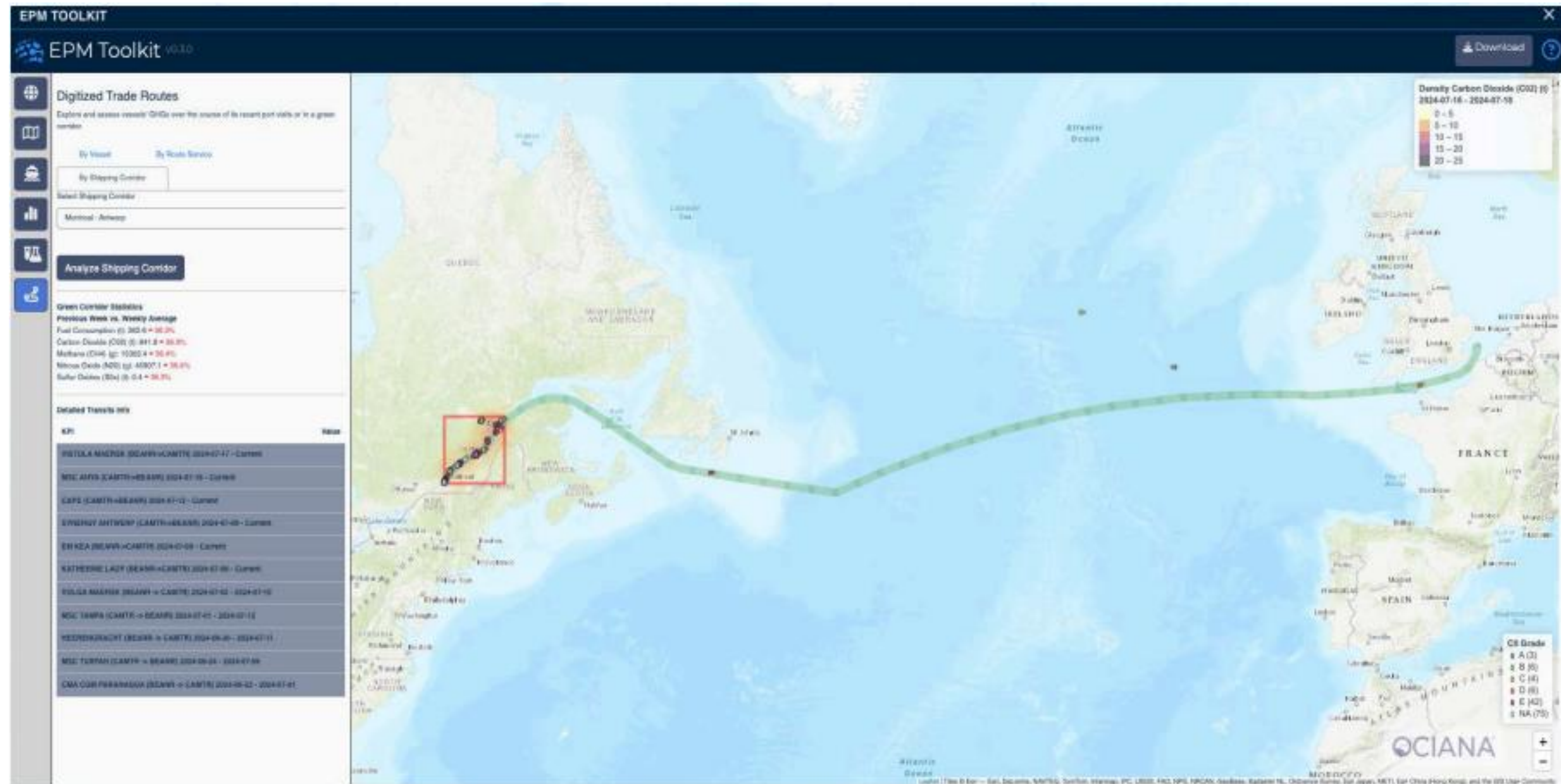
Assess compliance and explore scenarios to improve CII ratings to optimise efficiency.





# OCIANA® EPM Toolkit: Route View

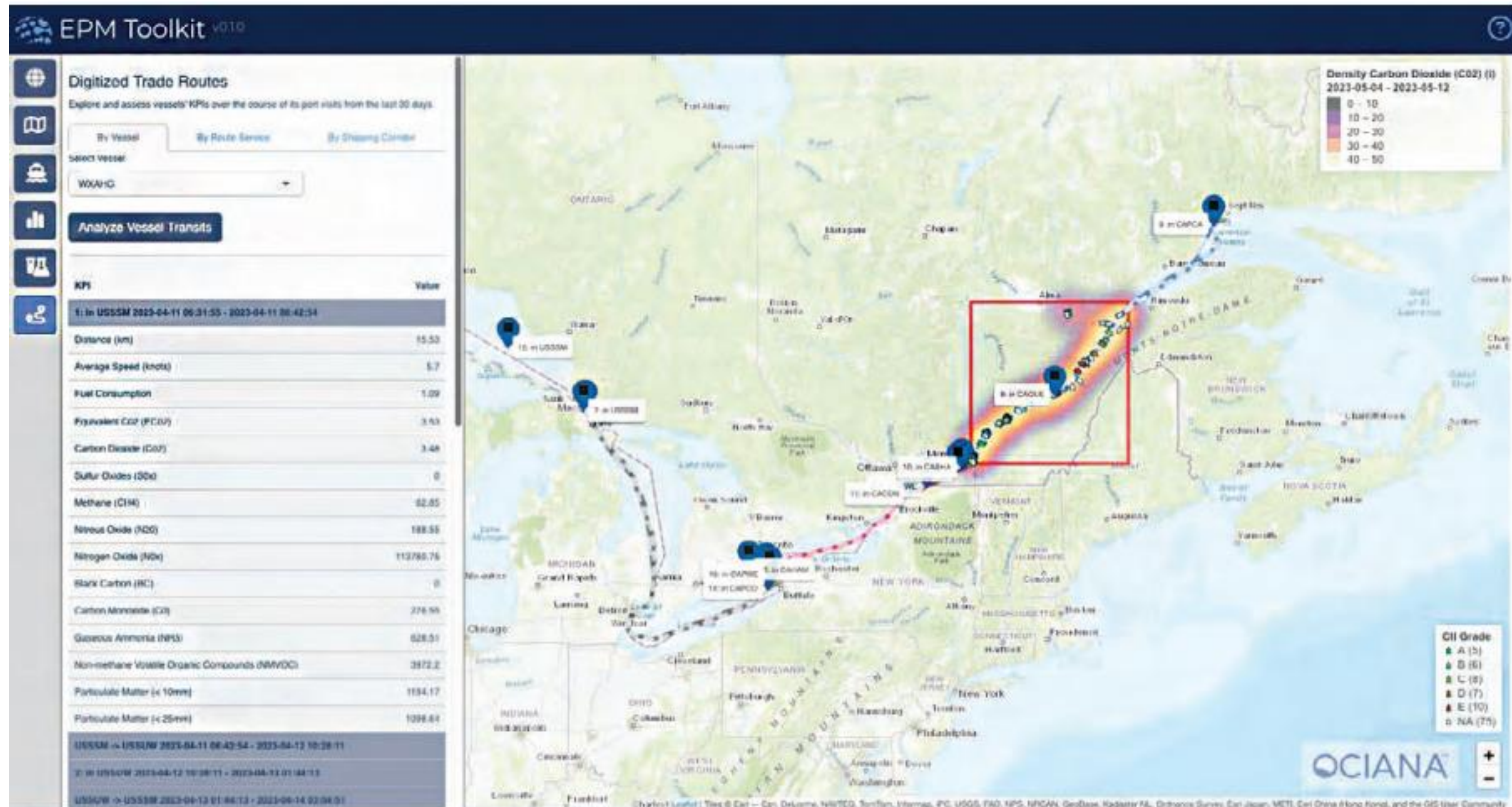
Analyze Green Shipping Corridor performance and facilitate identification of vessels supporting green incentive programs.





# OCIANA® EPM Toolkit: Route View

Analyze vessel route performance and facilitate identification of trip segments that are underperforming.







Navigate Tomorrow Today

Krista Foster  
[krista.foster@gsts.ca](mailto:krista.foster@gsts.ca)

Scott MacPhee  
[scott.macphee@gsts.ca](mailto:scott.macphee@gsts.ca)

[www.gsts.ca](http://www.gsts.ca)







Navigate Tomorrow **Today**

# THANK YOU!

GLOBAL SPATIAL TECHNOLOGY SOLUTIONS INC. ("GSTS") PROPRIETARY AND CONFIDENTIAL. The information which appears herein is proprietary and confidential and the property of GSTS. It is submitted for the sole purpose of enabling assessment thereof by the recipient and must be maintained in confidence, protected and not disclosed to any person or used for any other purpose without the prior written consent of GSTS.