

**Dallas/Fort Worth International Airport
Asset Management Strategies
November 8, 2011**

**Carol F. Davis
Vice President – Asset Management Department**

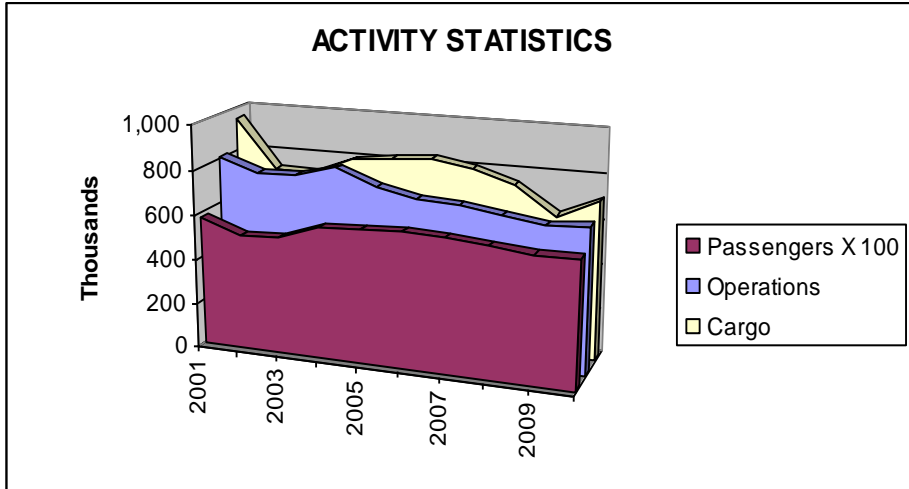
A decorative graphic element consisting of multiple light blue, curved lines that sweep across the bottom half of the slide, starting from the left edge and curving towards the right.

Dallas/Fort Worth International Airport



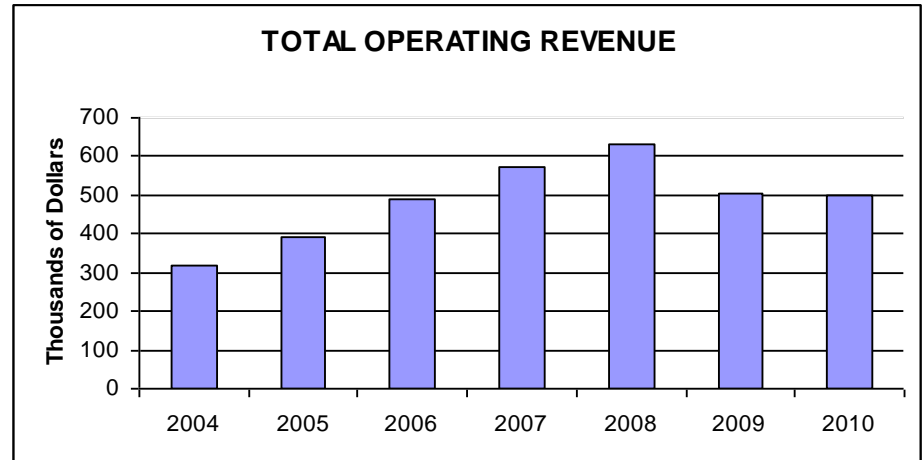
- 18,076 Acres of Land
- Seven (7) runways
- Five (5) terminals, Terminal D for both international and domestic service
- 155 gates
- Daily Passengers: Approximately 155,905
- 2010 Total Operations: 652,261
- 2010 Total Cargo: 711,606 US tons
- Total Economic Output: \$16.6 billion
- Terminal Renewal and Improvement Program (TRIP)
 - \$1.9 Billion over Seven Years
 - Terminals A, B, C, E
 - Scheduled to begin in February 2011
 - Enhanced Concessions
 - Expanded/ Reconfigured Security Checkpoints
 - Enhanced Self-Service Ticketing Areas
 - Improved Parking
- World Rankings: 3rd in terms of aircraft operations and 8th in terms of passengers
- The Airport will ultimately support:
 - Eight runways
 - Six terminals
 - A variety of land development opportunities

DFW Airport Operations & Revenue

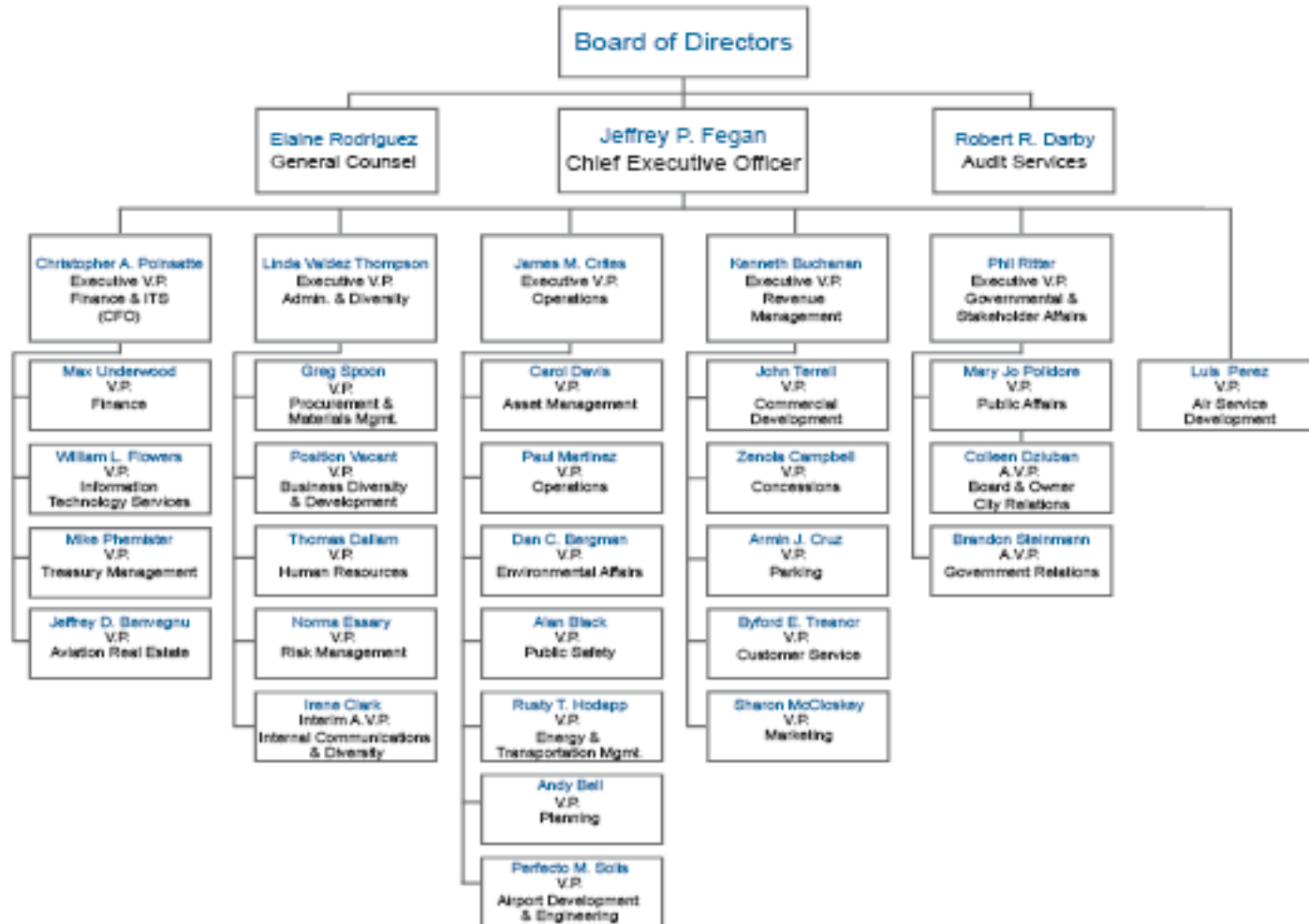


**AIRPORT OPERATIONS
2001 - 2010**

**AIRPORT OPERATING REVENUE
2001 - 2010**



Dallas/Fort Worth International Airport Organizational Chart



Dallas/Fort Worth International Airport History



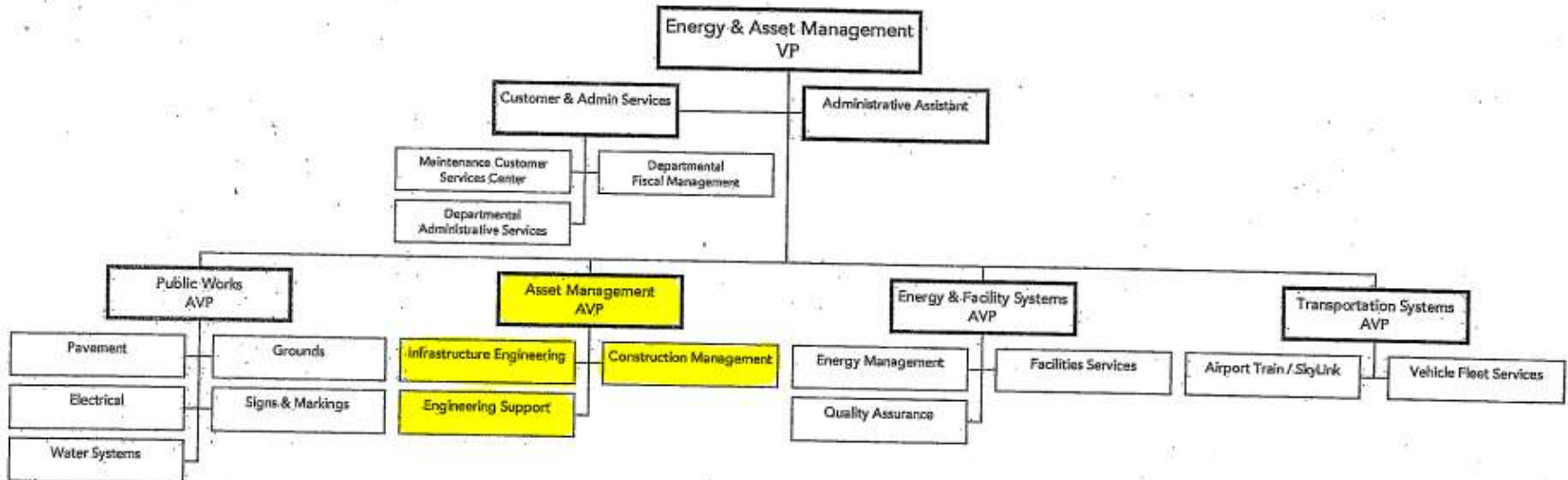
Best Selling Book!



Terminal D

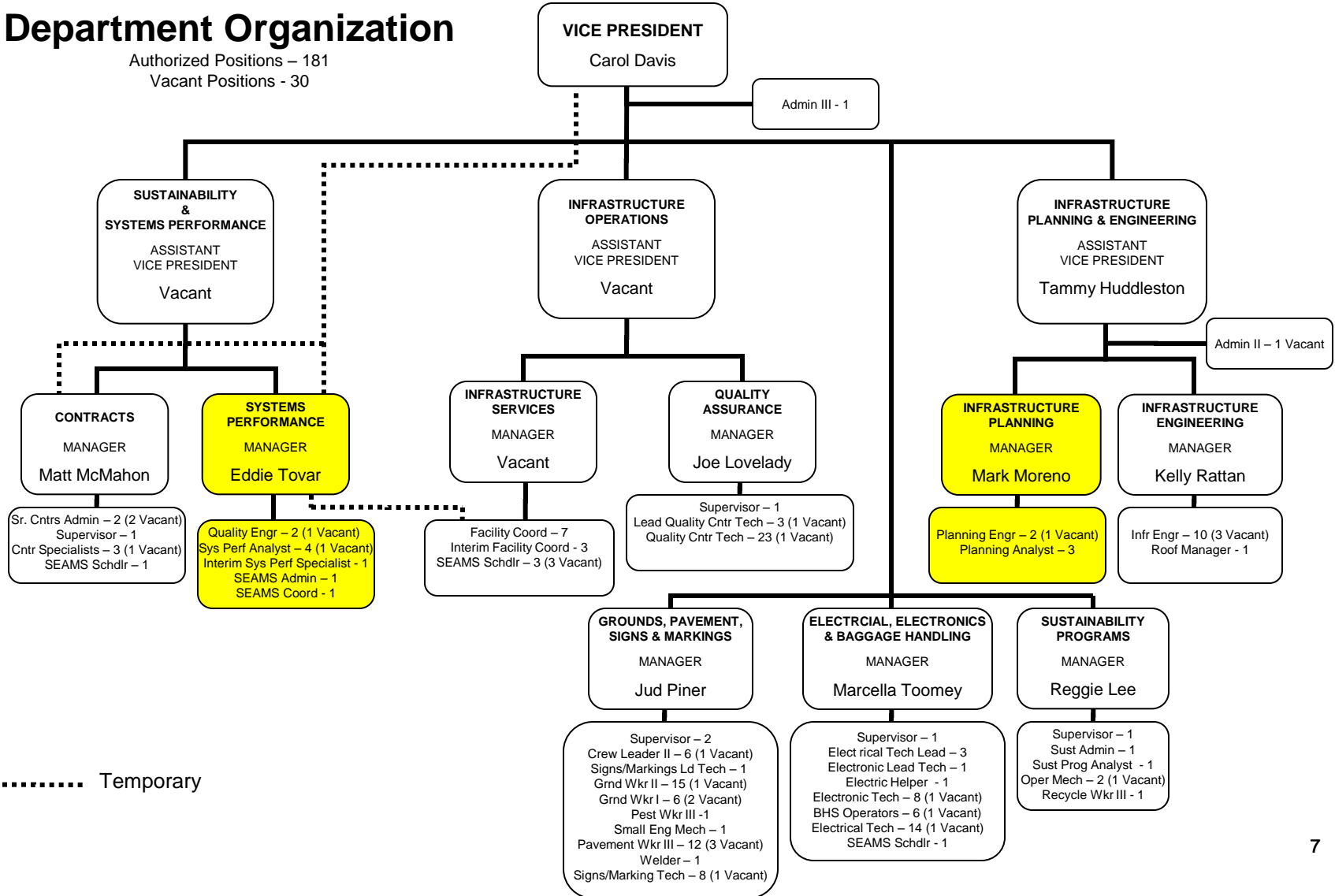


Energy & Asset Management Department Organizational Chart



Department Organization

Authorized Positions – 181
 Vacant Positions - 30



..... Temporary

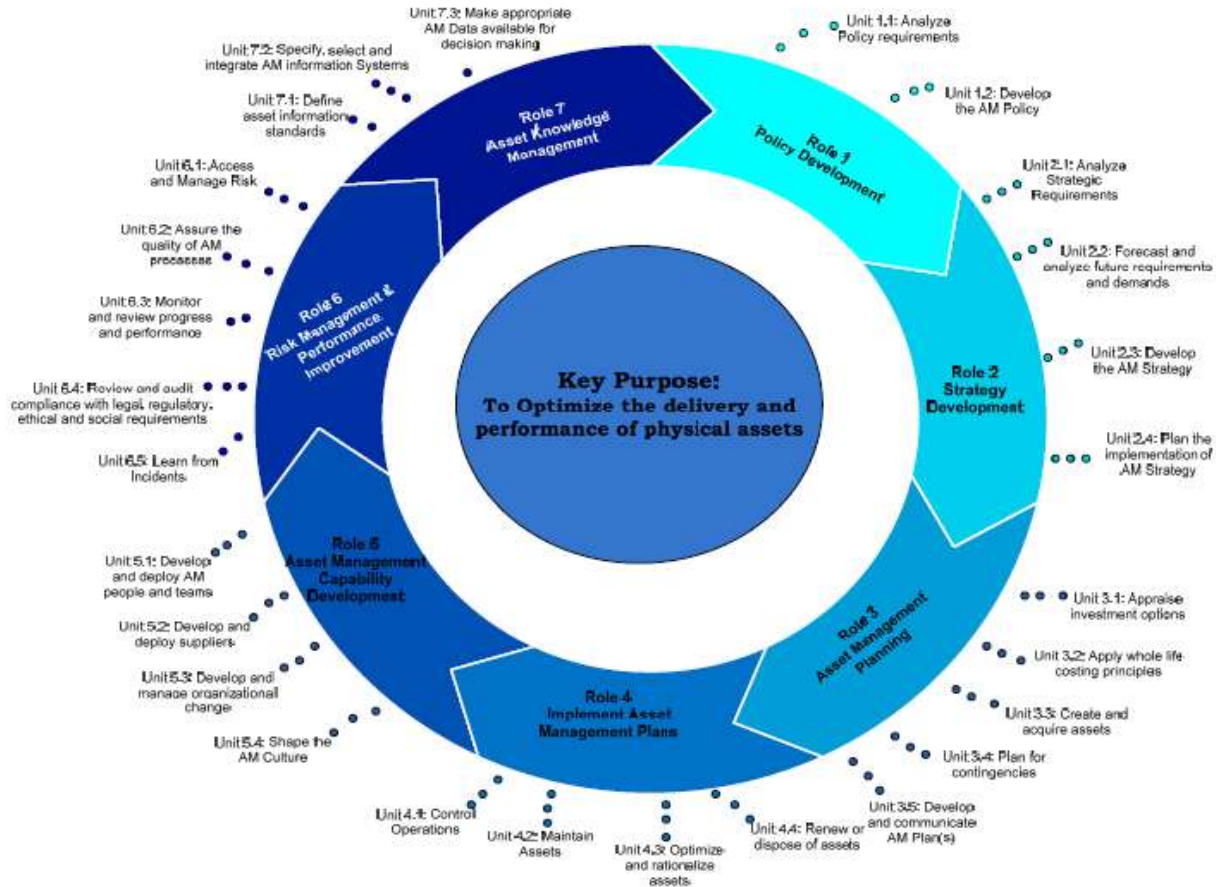
MISSION STATEMENT



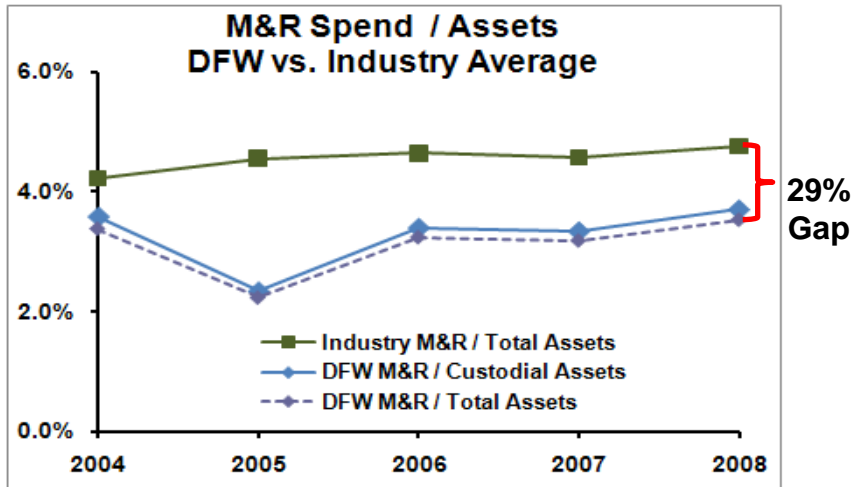
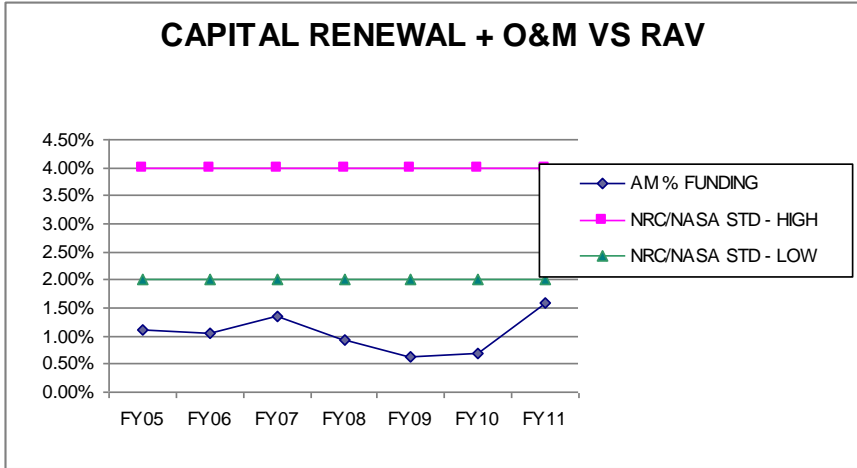
“The Asset Management Department manages the airport board's multi-billion dollar physical infrastructure by providing services necessary to ensure the safe and efficient operation of a world-class airport through core business activities of maintenance, repair, renewal, operation and special support.”

Publicly Available Specification 55

Figure 1 Roles and Competency Units for an Asset Management Organization (source: PAS 55, 2008 Part 1)



Asset /Infrastructure Financing

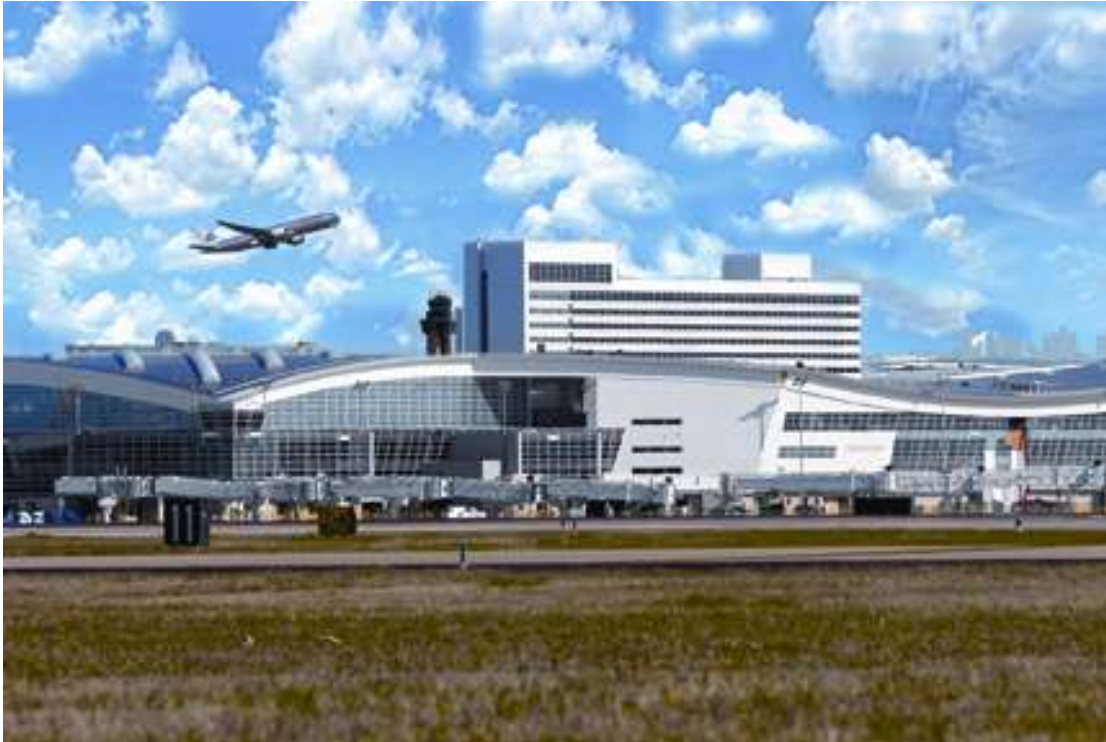


AIRFIELD INFRASTRUCTURE

Concrete (sf)		
	Runway	13,920,000
	Taxiway	50,227,529
	Apron	24,132,823
	Perimeter Taxiway	2,385,451
	Landside roadways	81,607,680
	Total	172,273,483
AOA Markings (sf)		
	Runway	1,284,388
	Taxiway	3,050,212
	ARFF RD	251,205
	Total	4,585,805
AOA Markings (ea)		
	Runway Hold Position	141
	AEP gate position	150
	Painted pave'mt markings	132
	Emer. Road traffic buttons	6,240
	Reflective batons	5,034
Signs/Fences/Gates		
	Lighted Signs	1,045
	Lighted Windsocks	16
	Obstruction Lights	127
	Parking Gates	95
	AOA Gates	67
	Intellikey Gate Locks	37
	AOA Fence signs	1,061
AOA Fence (mi)		
	Chain link fence	38

Maintenance Performance Standard Implementation

Custodial Services



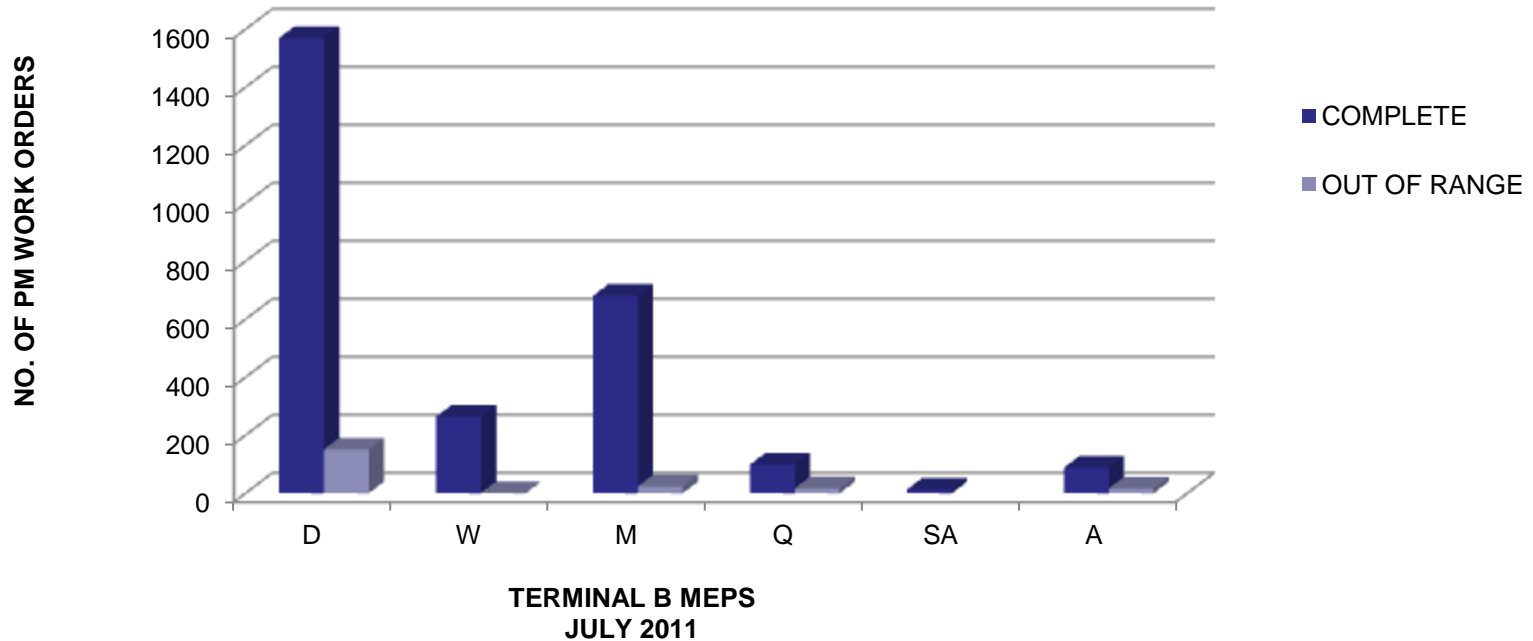
TERMINAL D
2 MILLION SQUARE FOOT FACILITY

SAVINGS !!!

**\$3.90 PER SQUARE FOOT
FOR THE TERMINAL D
5 YEAR
CUSTODIAL CONTRACT**

WORK ORDER MANAGEMENT

Terminal B Maintenance Service Contractor PM Work Order Performance for One Month



Snow & Ice Removal Equipment Purchase



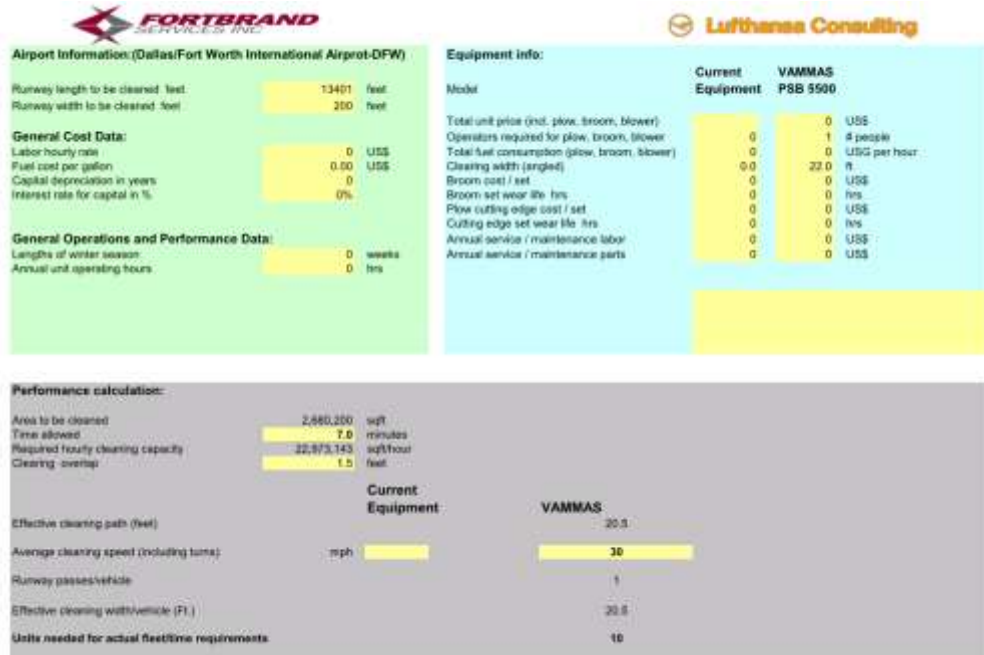
MULTIFUNCTIONAL EQUIPMENT



FRONT MOUNTED BROOMS



DEICER TANKER SPRAYER



MULTIFUNCTIONAL EQUIPMENT PERFORMANCE CRITERIA

ACRP 01-16

Asset and Infrastructure Management for Airports

The image shows the cover of a report from the Transportation Research Board (TRB) of the Airport Cooperative Research Program (ACRP). The cover has a blue background with a faint image of an airport terminal. The text 'TRANSPORTATION RESEARCH BOARD' is written vertically on the right side in orange. The acronym 'ACRP' is prominently displayed in the center in large white letters, with 'Airport Cooperative Research Program' written below it in a smaller white font. At the bottom, there are four small square images: a silhouette of an airplane taking off, a green digital display showing flight times and the word 'CANCEL', a person walking through an airport terminal, and a close-up of an airplane's nose. In the bottom right corner, the logos for the National Academy of Sciences, National Academy of Engineering, Institute of Medicine, and National Research Council are listed, along with 'THE NATIONAL ACADEMIES' logo and the date 'April 6, 2011'. The TRB logo is in the bottom left corner.

**TRANSPORTATION
RESEARCH BOARD**

ACRP

Airport Cooperative Research Program

National Academy of Sciences
National Academy of Engineering
Institute of Medicine
National Research Council

THE NATIONAL ACADEMIES
Advisers to the Nation on Science, Engineering, and Medicine

April 6, 2011

TRB

Conclusion

Asset Management Strategies

In developing Strategic Asset Management, the following minimum objectives should be implemented:

- Development of an organization consisting of infrastructure planning and systems performance functions teaming with engineering and sustainability.
- Development of work standards and criteria
- Improvement in work practices and work order management
- Development of KPIs that track the maintenance of critical systems and infrastructure renewal funding levels for benchmarking to industry standards
- Development of a five (5) year project planning instrument.

Working relationships with other departments, tenants and contractors should be developed such that improvement in work processes and maintenance practices becomes a shared responsibility for improving asset performance, work efficiencies, capital and O&M funding and KPI and performance measures. Such collaboration will produce cost effective results that exemplify Baldrige award winning corporation practices and strategic asset management methodologies.

QUESTIONS?